



GMT MONTHLY MEMBERSHIP PROGRESS REPORT

Results as of: 5/31/2020

GMT Constitutional Area 6, Group H

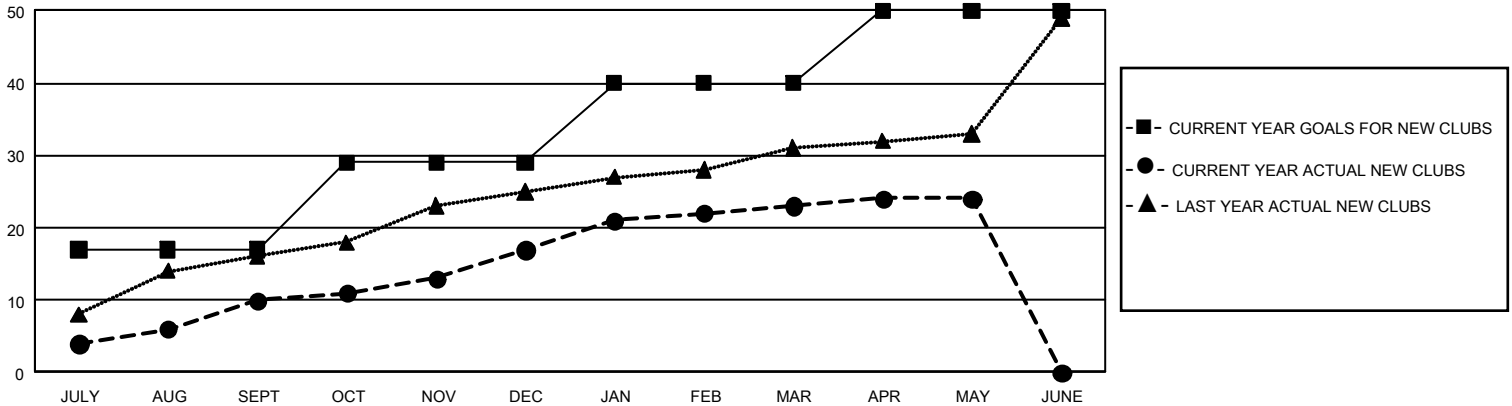
GMT: OPEN

REPORT DOES NOT INCLUDE CLUBS IN UNDISTRICTED AREAS.

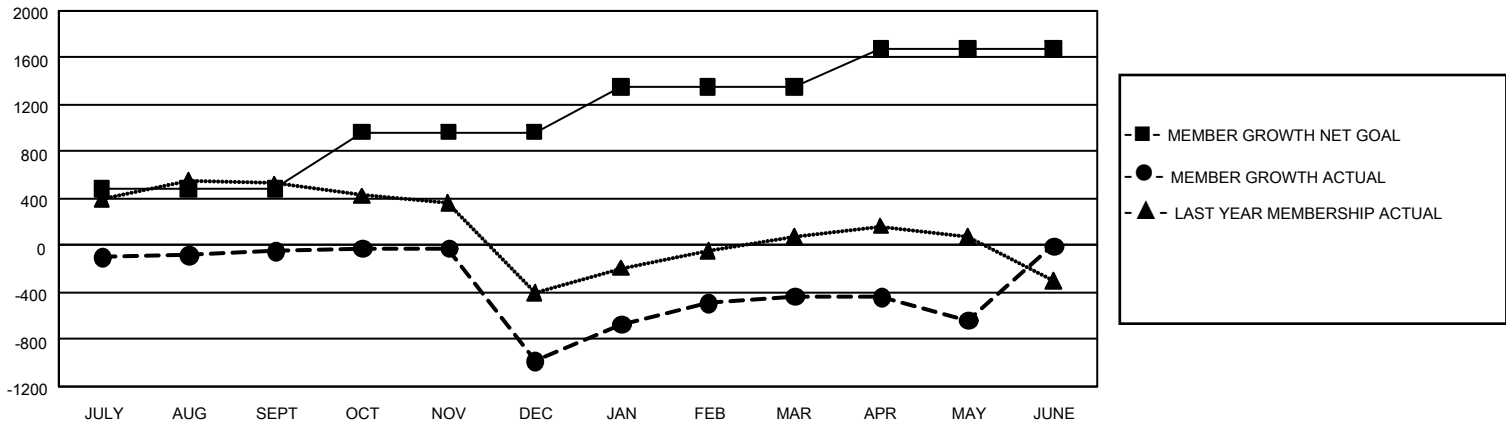
Clubs			
RESULTS FOR 2019-2020			
QUARTER	NEW CLUB GOAL	NEW CLUBS	DROPPED CLUBS
JULY/AUG/SEPT	51	10	4
OCT/NOV/DEC	36	7	30
JAN/FEB/MAR	33	6	1
APR/MAY/JUNE	30	1	1

Members			
RESULTS FOR 2019-2020			
QUARTER	MEMBER GROWTH NET GOAL	MEMBER GROWTH ACTUAL	DROPPED MEMBERS ACTUAL (including transfers)
JULY/AUG/SEPT	1,455	713	690
OCT/NOV/DEC	1,440	451	1,374
JAN/FEB/MAR	1,155	978	294
APR/MAY/JUNE	975	195	385

GOALS AND ACTUAL NEW CLUBS CUMULATIVE



GOALS AND ACTUAL MEMBERS CUMULATIVE



DROPPED CLUBS: 36	387 CLUBS OF 687 ADDED 1 OR MORE NEW MEMBERS	<u>GENDER DISTRIBUTION</u>	
<u>DROPPED MEMBERS</u>		MALE	19,064 (81.47%)
DECEASED	82	FEMALE	4,336 (18.53%)
CLUB CANCELLED	699	TOTAL FAMILY UNIT MEMBERS 7,753	
OTHER	1,962		
TOTAL	2,743		
CLICK HERE FOR CUMULATIVE MEMBERSHIP DATA			